

Proprietary data, company confidential.  
All rights reserved

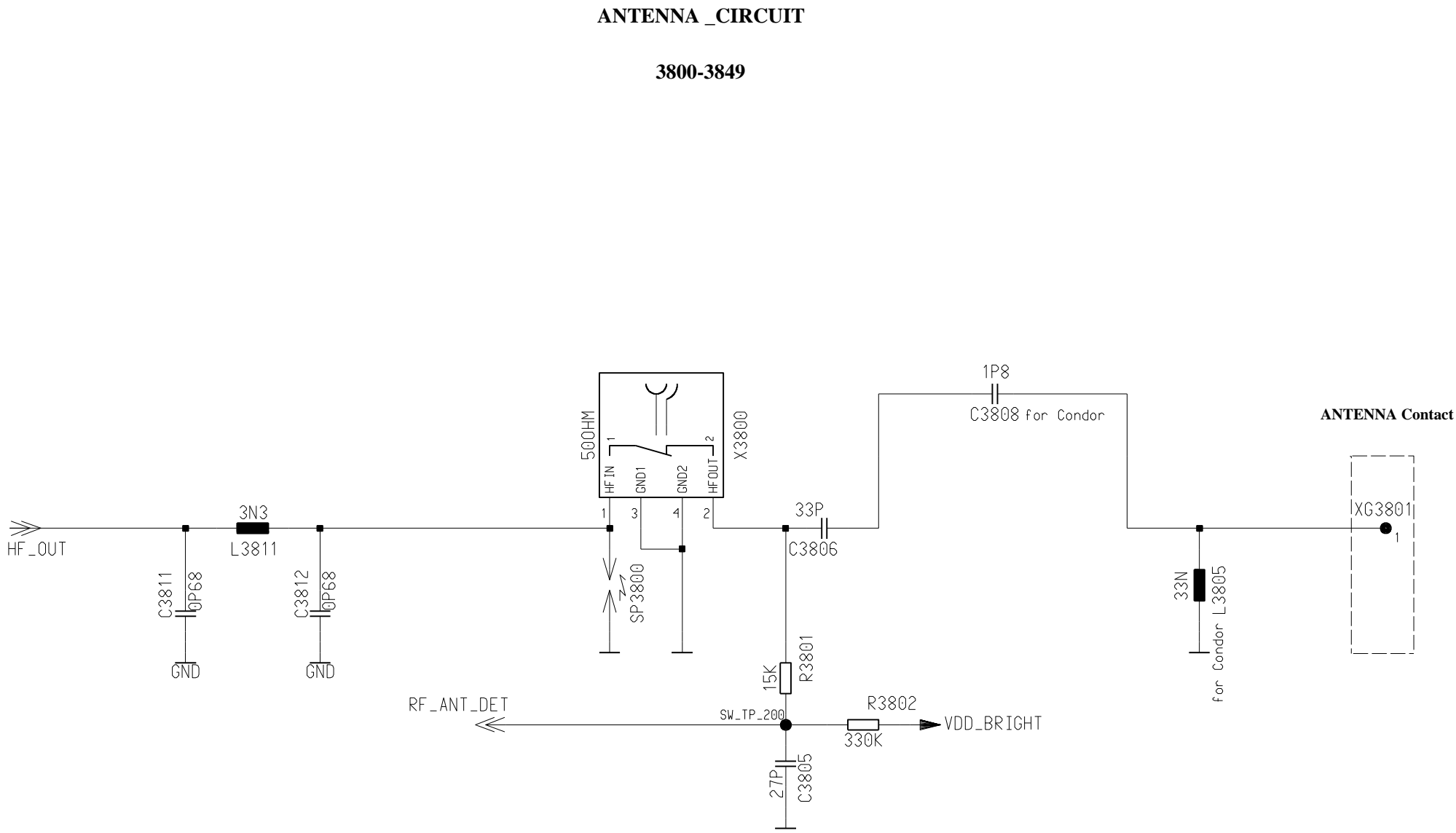
Als Betriebsgeheimnis anvertraut  
Alle Rechte vorbehalten

1		2		3		4		5	
HIERARCHY						SHEET		PDF-SHEET	
A5B00900184206-26212						index	sheet 1		
						netlist1	sheet 2		
						poslist1	sheet 3		
						page1	----		
						sheet1	sheet 4		
						sheet2	sheet 5		
						sheet4	sheet 6		
						sheet10	sheet 7		
						sheet11	sheet 8		
						sheet12	sheet 9		
						sheet13	sheet 10		
						sheet15	sheet 11		
						sheet16	sheet 12		
						sheet26	sheet 13		
						sheet36	sheet 14		

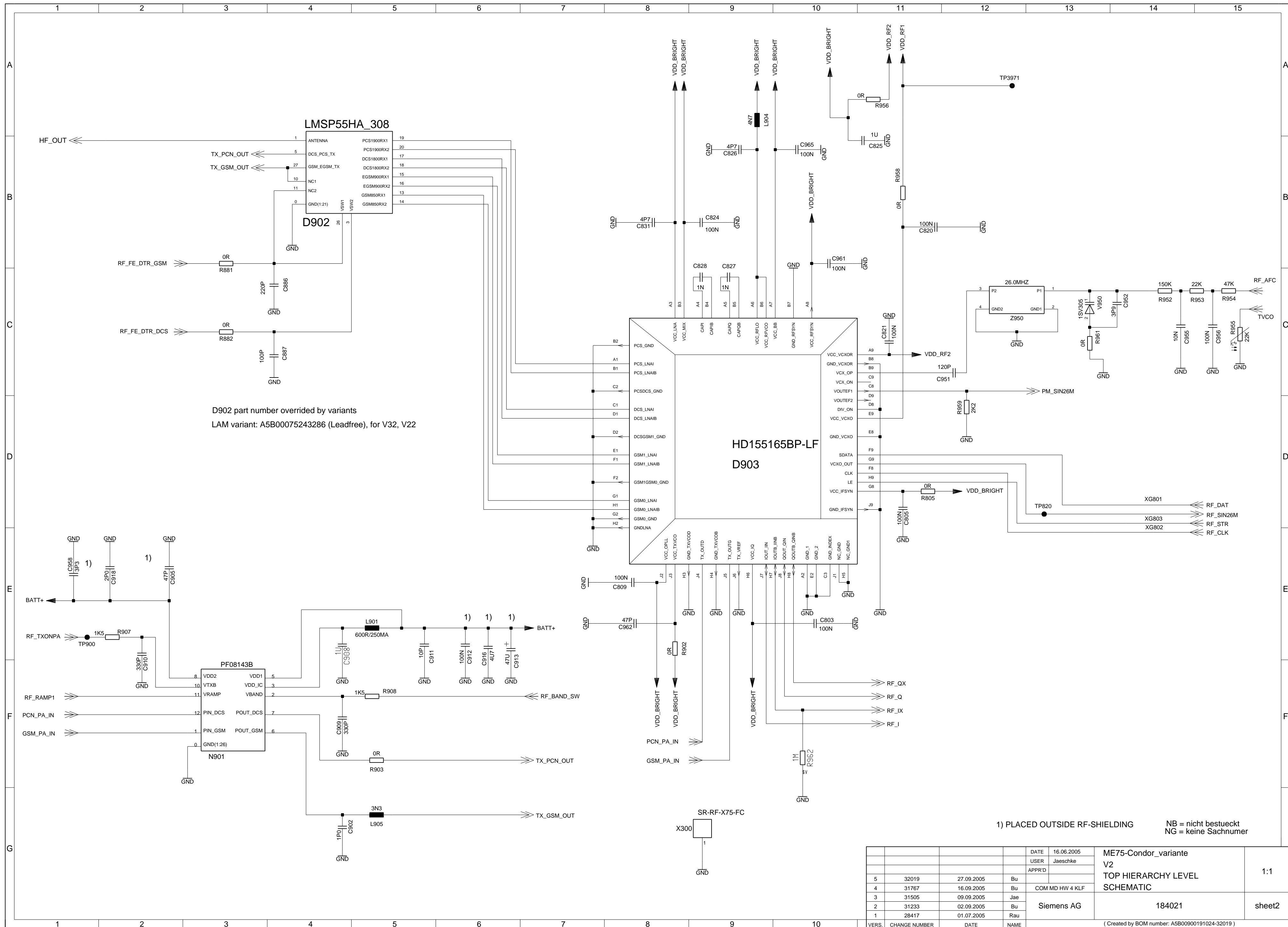
				DATE	16.06.2005	ME75-Condor_variante V2 TOP HIERARCHY LEVEL SCHEMATIC	1:1
				USER	Jaeschke		
				APPR'D			
5	32019	27.09.2005	Bu				
4	31767	16.09.2005	Bu	COM MD HW 4 KLF		184021	netlist1
3	31505	09.09.2005	Jae	Siemens AG			
2	31233	02.09.2005	Bu				
1	28417	01.07.2005	Rau				
VERS.	CHANGE NUMBER	DATE	NAME	( Created by BOM number: A5B00900191024-32019 )			

Als Betriebsgeheimnis anvertraut  
Alle Rechte vorbehalten

				DATE	16.06.2005	ME75-Condor_variante V2 TOP HIERARCHY LEVEL SCHEMATIC	1:1
				USER	Jaeschke		
				APPR'D			
5	32019	27.09.2005	Bu				
4	31767	16.09.2005	Bu	COM MD HW 4 KLF		184021	poslist1
3	31505	09.09.2005	Jae	Siemens AG			
2	31233	02.09.2005	Bu				
1	28417	01.07.2005	Rau				
VERS.	CHANGE NUMBER	DATE	NAME	( Created by BOM number: A5B00900191024-32019 )			

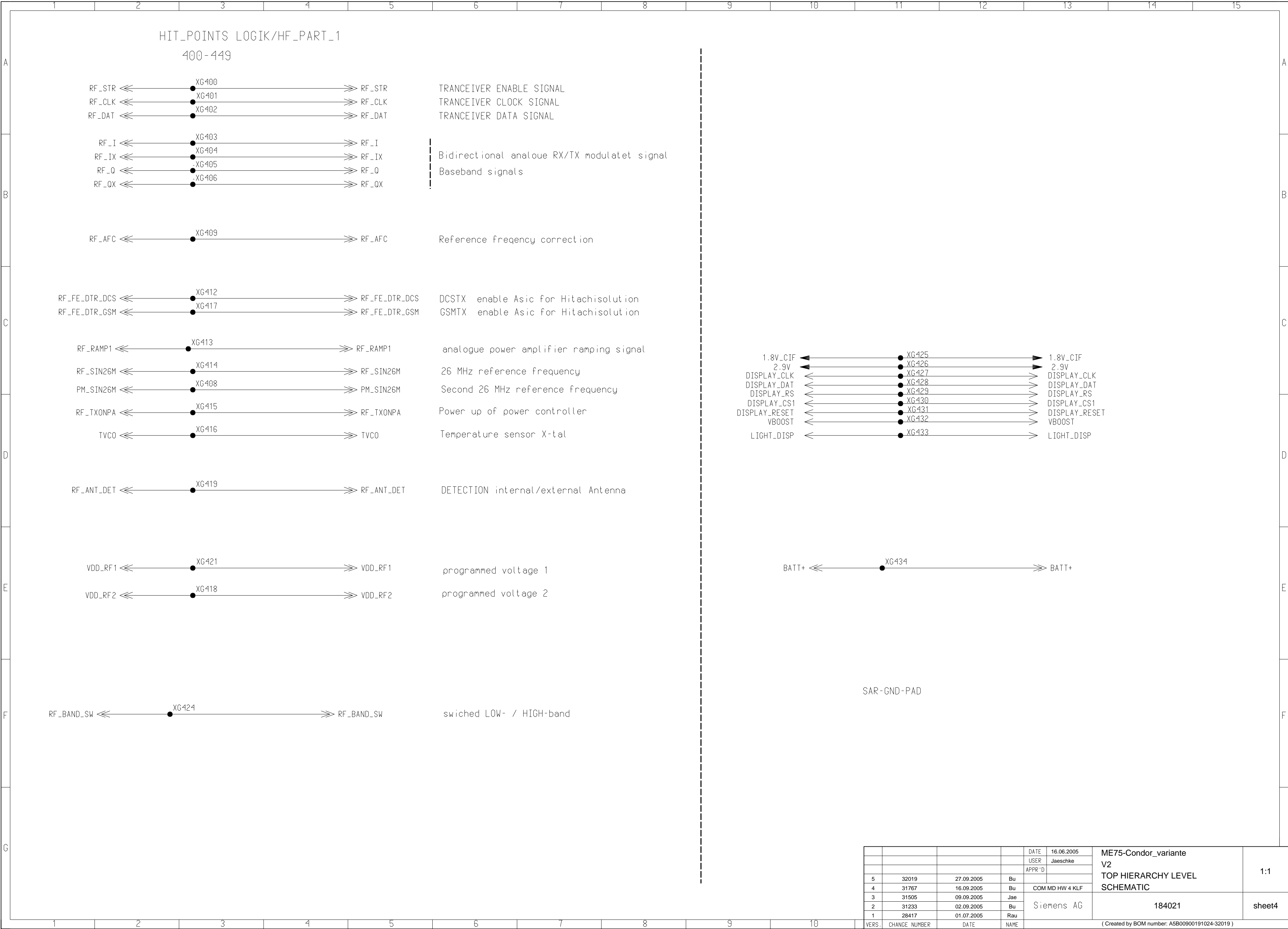


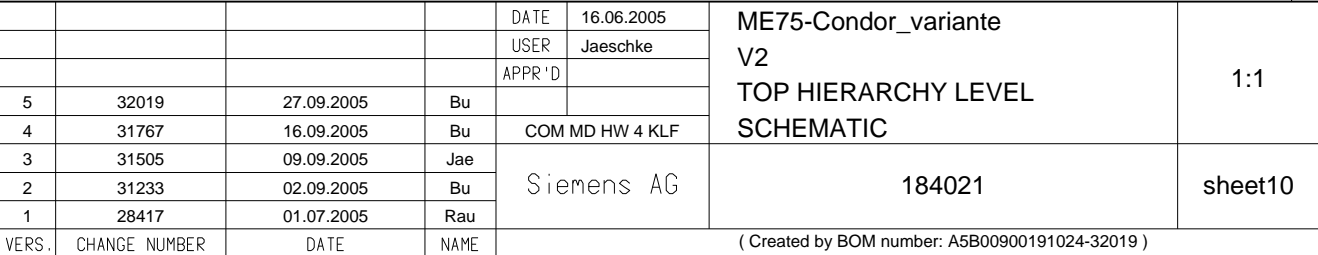
				DATE	16.06.2005	ME75-Condor_variante V2 TOP HIERARCHY LEVEL SCHEMATIC	1:1
				USER	Jaeschke		
				APPR'D			
5	32019	27.09.2005	Bu	COM MD HW 4 KLF			
4	31767	16.09.2005	Bu	Siemens AG		184021	sheet1
3	31505	09.09.2005	Jae				
2	31233	02.09.2005	Bu				
1	28417	01.07.2005	Rau				
VERS.	CHANGE NUMBER	DATE	NAME	( Created by BOM number: A5B00900191024-32019 )			



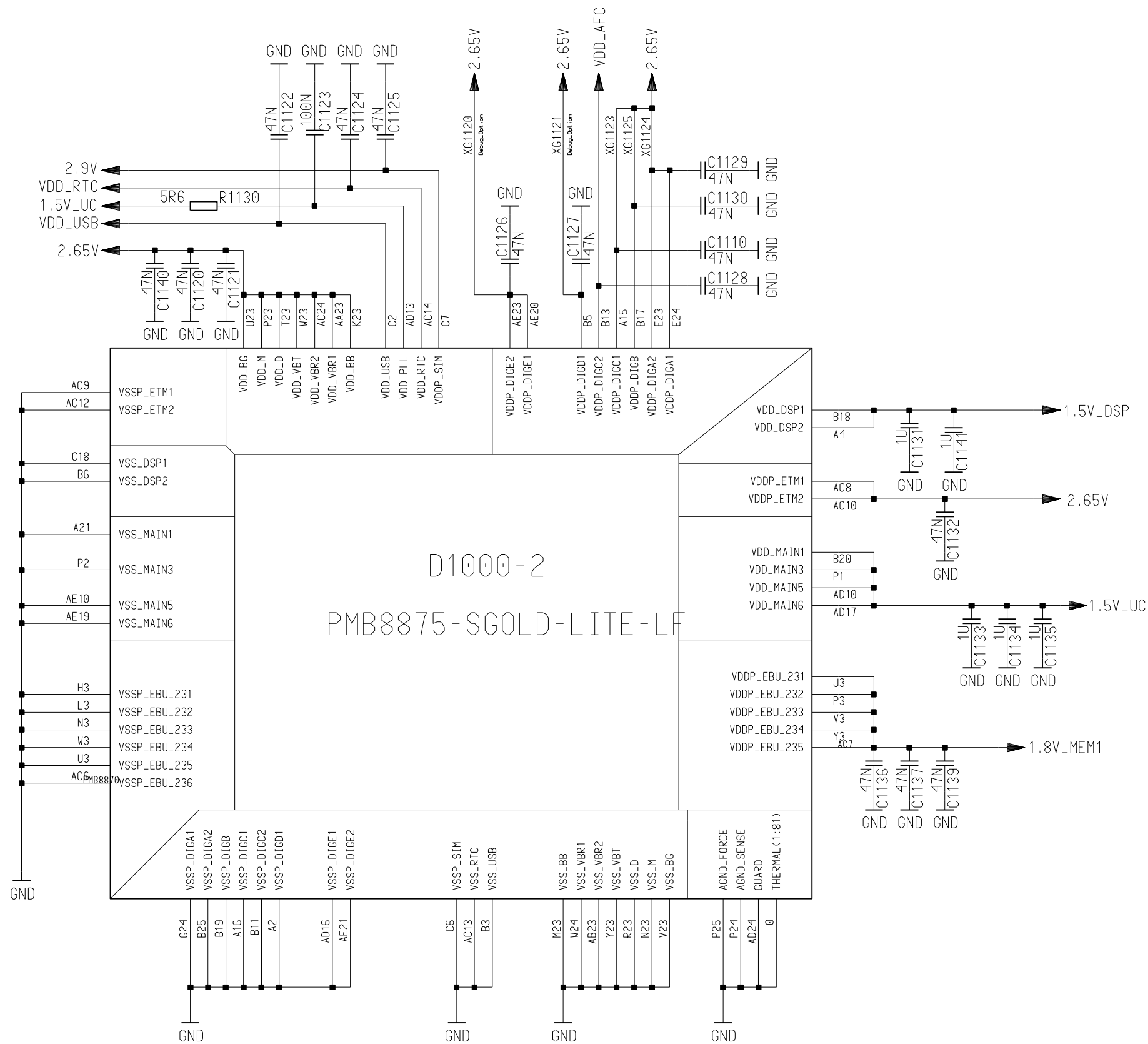
Proprietary data, Company confidential.  
all rights reserved

Als Betriebsgeheimnis anvertraut  
alle Rechte vorbehalten



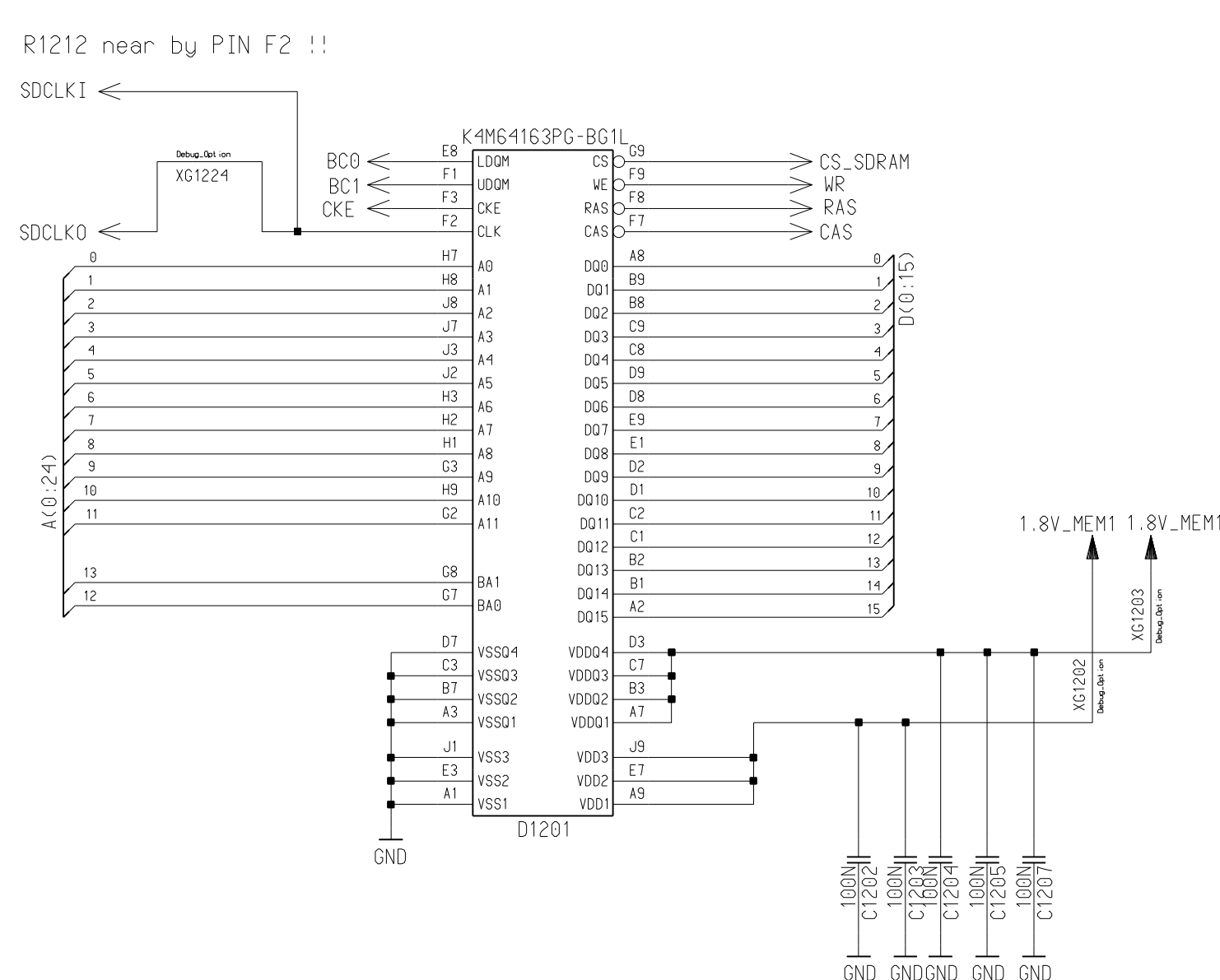
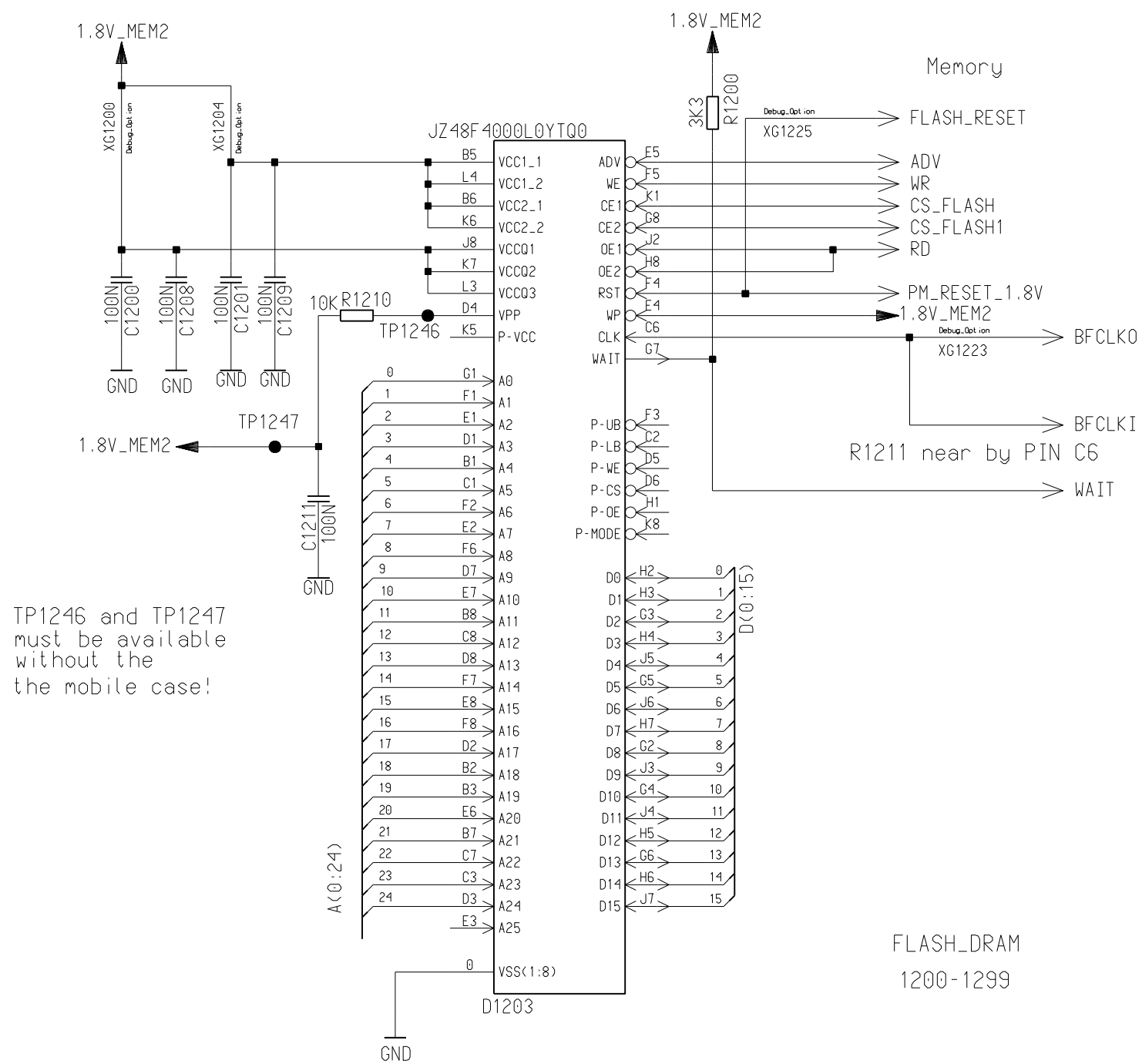


S-Goldlite Supply-Domain  
1100-1199

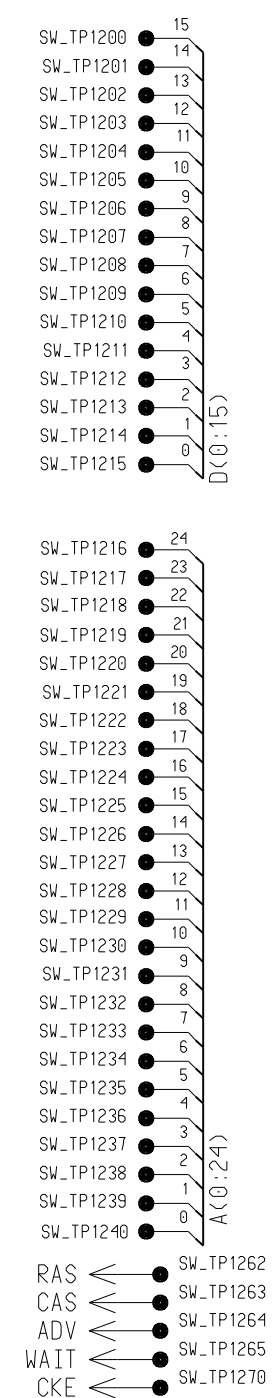


				DATE	16.06.2005	ME75-Condor_variante V2 TOP HIERARCHY LEVEL SCHEMATIC	1:1
				USER	Jaeschke		
				APPR'D			
5	32019	27.09.2005	Bu	COM MD HW 4 KLF		Siemens AG	184021
4	31767	16.09.2005	Bu				
3	31505	09.09.2005	Jae				
2	31233	02.09.2005	Bu				
1	28417	01.07.2005	Rau				sheet11
VERS.	CHANGE	NUMBER	DATE	NAME	( Created by BOM number: A5B00900191024-32019 )		





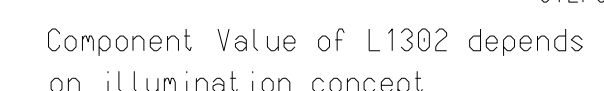
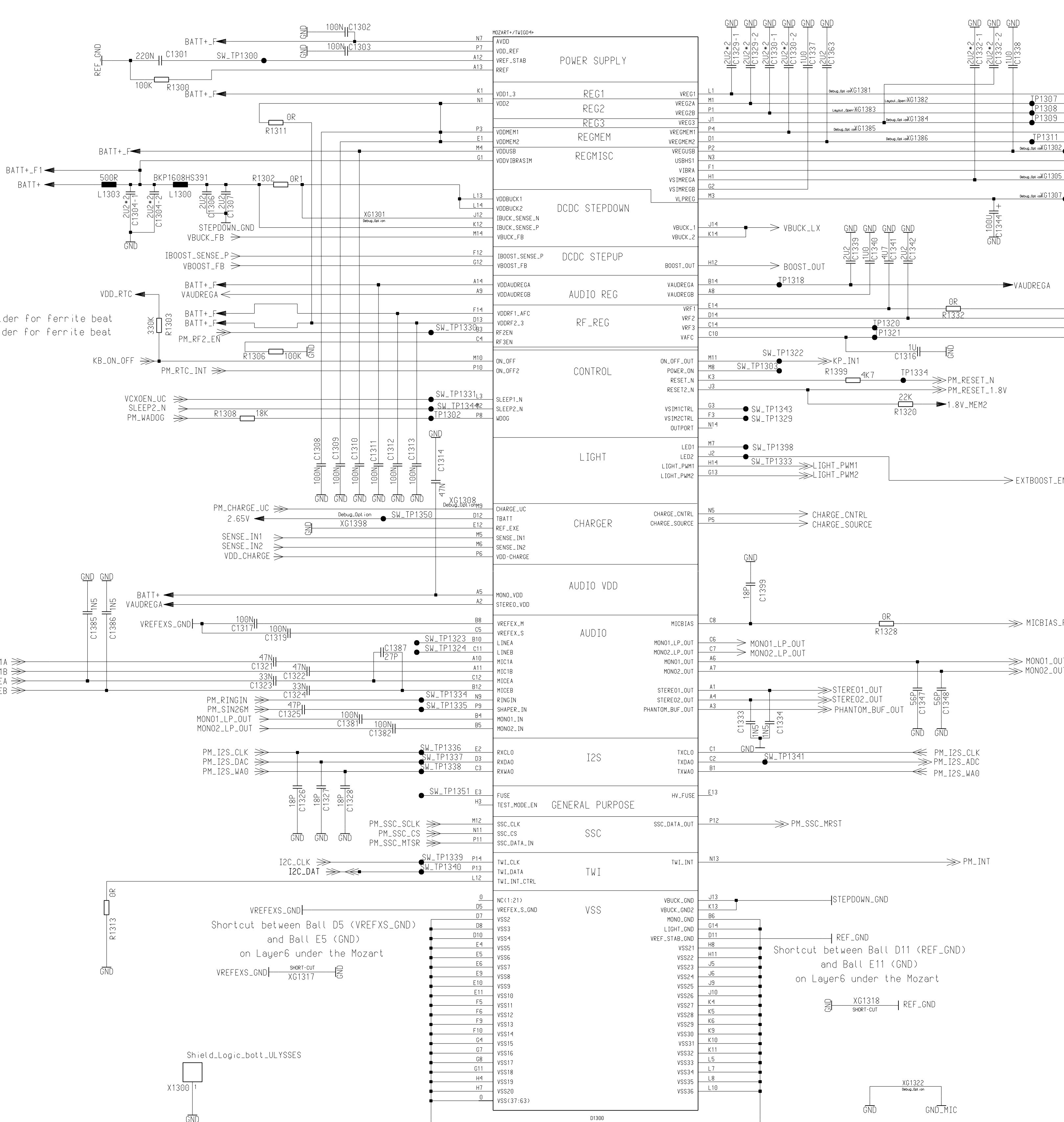
SW-TESTPUNKTE



- 1) place a capacitor (decoupling) to every power ball (VCC, VCCQ) as close as possible. There should be one capacitor for each ball.
- 2) connect the power plane as short as possible via the decoupling capacitor to the power ball.
- 3) connect ground as close as possible to the decoupling capcitor.

- 4) Please avoid branches by routing signals to more than one target (ball), this means for every signal expecting the power connectivity's. This is very important for the clock signals.
- 5) The BFCLK0 & BFCLKI signal is a loop line from SGOLD2 to the Memory and back to SGOLD2. So avoid branches here as well. The same applies to SDCLK0 & SDCLKI.

				DATE	16.06.2005	ME75-Condor_variante V2 TOP HIERARCHY LEVEL SCHEMATIC	1:1	
				USER	Jaeschke			
				APPR'D				
5	32019	27.09.2005	Bu			Siemens AG	184021	sheet12
4	31767	16.09.2005	Bu		COM MD HW 4 KLF			
3	31505	09.09.2005	Jae					
2	31233	02.09.2005	Bu					
1	28417	01.07.2005	Rau					
VERS	CHANGE	NUMBER	DATE	NAME	( Created by BOM number: A5B00900191024-32019 )			

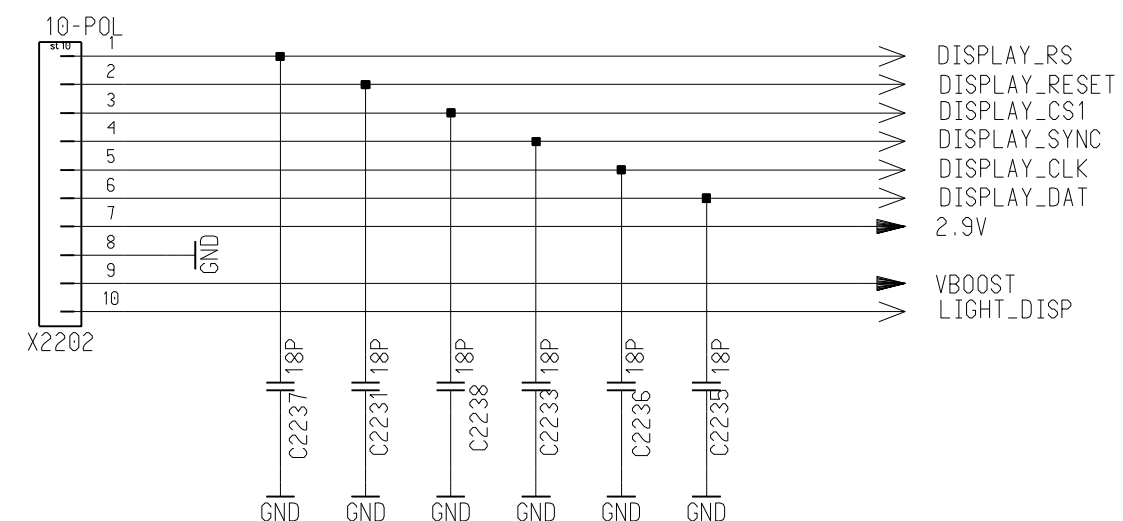
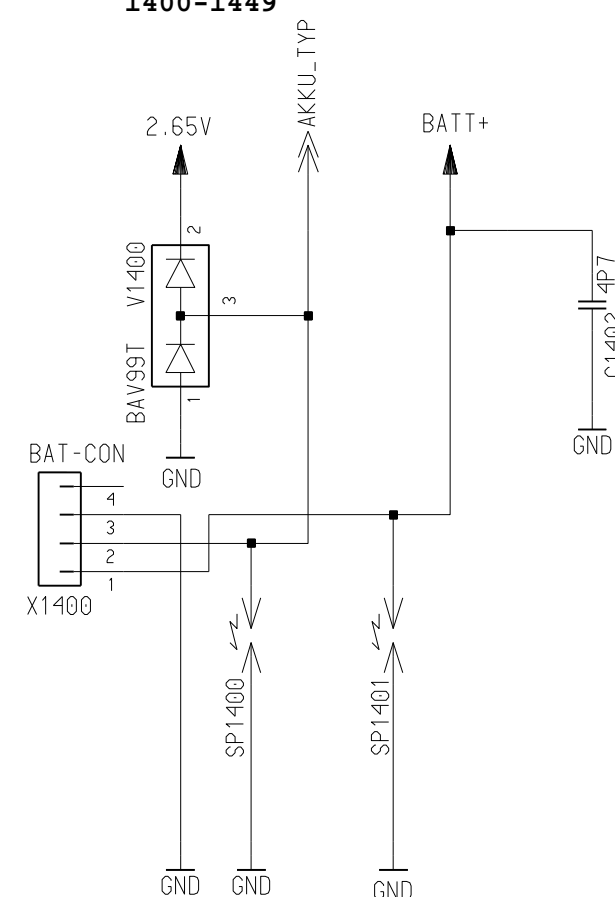


sin nuestra expresa autorización, queda terminantemente prohibida la reproducción total o parcial de este documento, así como su uso indebido y/o su exhibición o comunicación pública. De los infractores de esta prohibición quedará a cargo de los infractores la responsabilidad y se reservan todos los derechos para el caso de la concesión de este documento de invento o el registro de Modelo de Utilidad.

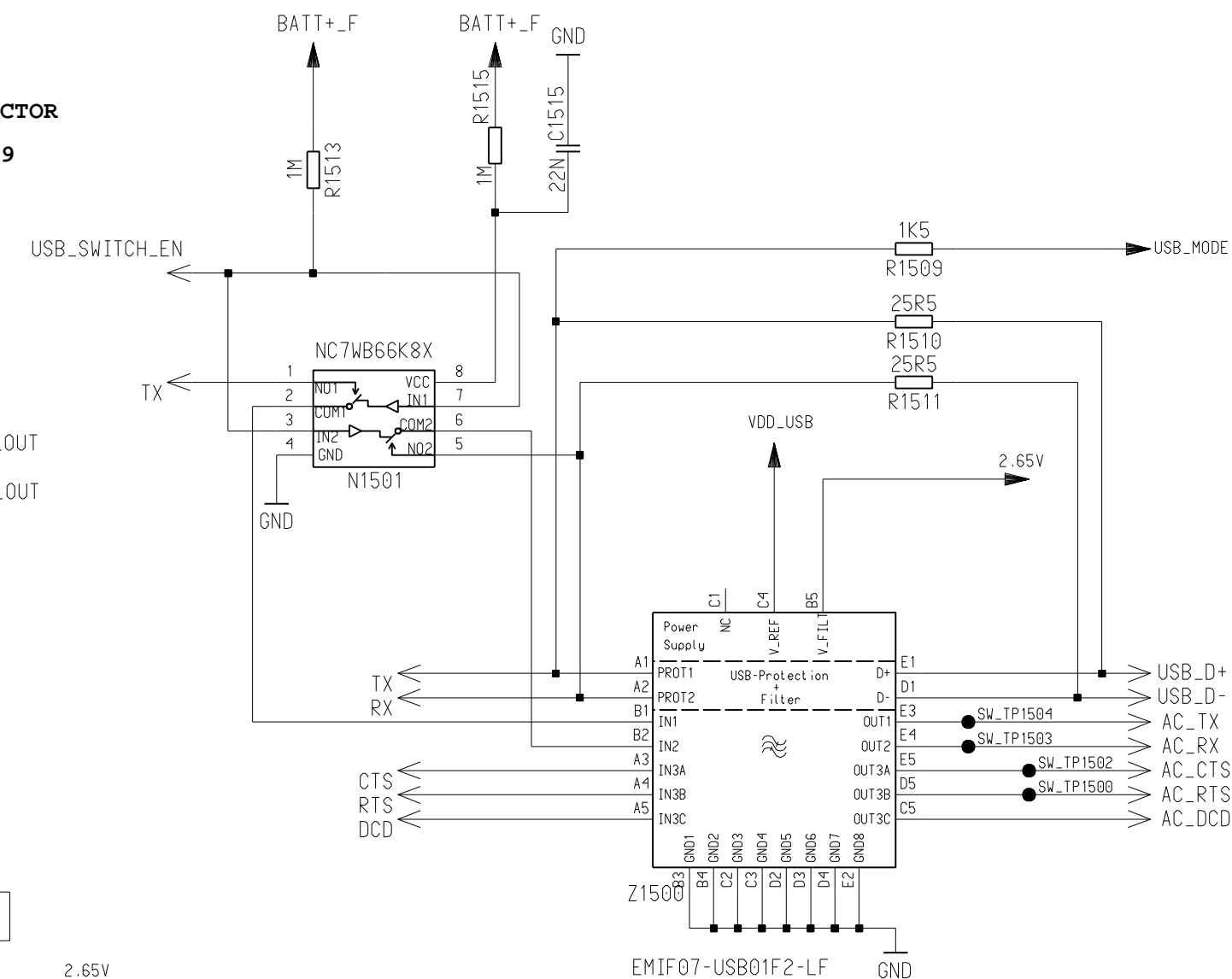
Copying of this document, and giving it to others and the use of the communication of this document without express authority, offenders are liable to the payment of damages and the responsibility of the grant of a Patent or the registration of a Utility Model or Design.

Weitergabe sowie Vervielfältigung dieser Unterlage  
Verbreitung und Mitteilung ihres Inhalts nicht gestattet,  
soweit nicht ausdrücklich anders bestimmt ist.  
Infolge Verstoßes gegen diese Vorschrift kann eine  
Verlängerung des Patentschutzes, eine Anfechtung oder  
Fehl der Patenterteilung oder DM-Eintragung vorliegen

					DATE	16.06.2005	ME75-Condor_variante V2 TOP HIERARCHY LEVEL SCHEMATIC	1:1	sheet13
					USER	jaeschke			
					APPR'D				
5	32019	27.09.2005	Bu						
4	31767	16.09.2005	Bu		COM MD HW 4 KLF				
3	31505	09.08.2005	Jae						
2	31223	02.09.2005	Bu						
1	28417	01.07.2005	Rau		Siemens AG	184021			
VERS.	CHANGE	NUMBER	DATE	NAME	( Created by BOM number: ASB00909101024-32019 )				



65-Platform\_schematic\_sheet14

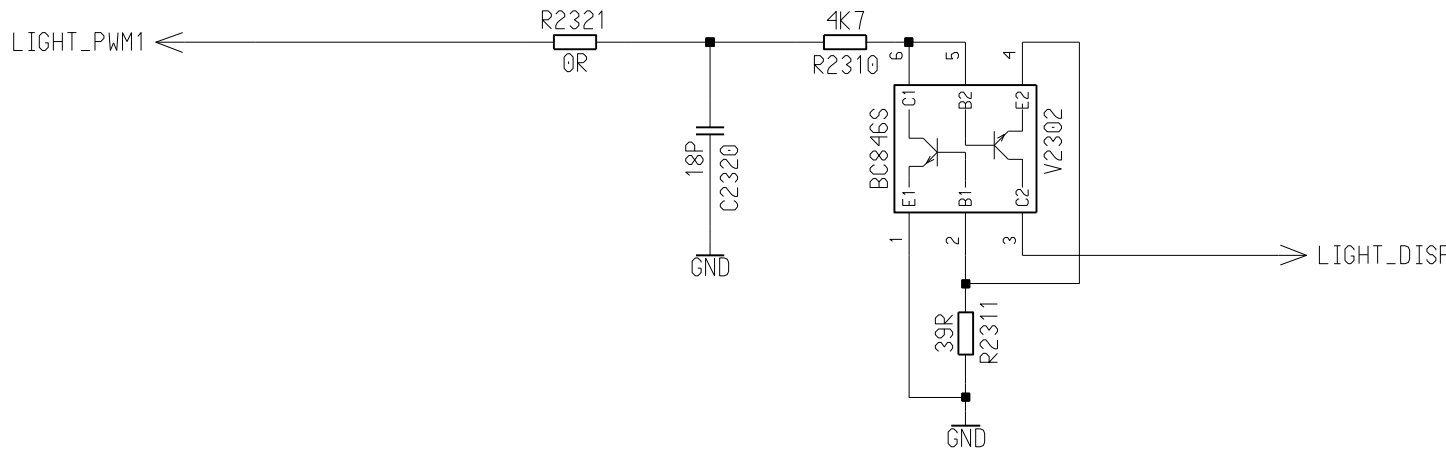


				DATE USER	16.06.2005 Jaeschke	ME75-Condor_variante V2 TOP HIERARCHY LEVEL SCHEMATIC	1:1
				APPR 'D			
5	32019	27.09.2005	Bu				
4	31767	16.09.2005	Bu	COM MD HW 4 KLF			
3	31505	09.09.2005	Jae	Siemens AG			
2	31233	02.09.2005	Bu				
1	28417	01.07.2005	Rau				
VERS	CHANGE	NUMBER	DATE	NAME	( Created by BOM number: A5B00900191024-32019 )		

65-Platform\_schematic\_sheet23

DISPLAY\_BACKLIGHT

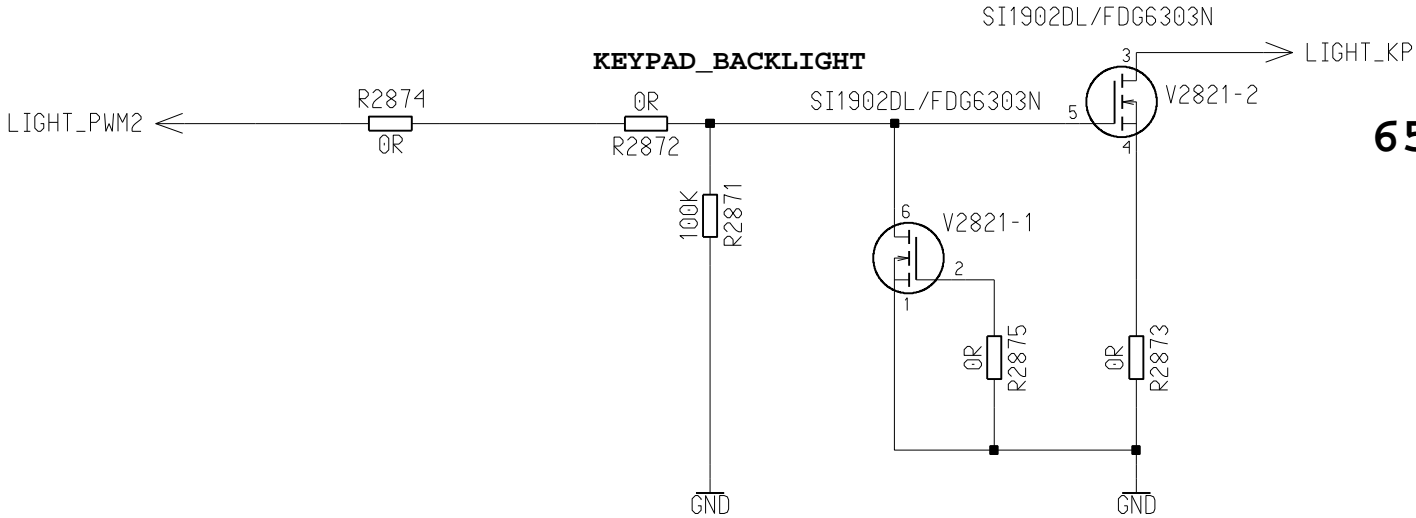
2300-2399



KEYPAD\_BACKLIGHT

SI1902DL/FDG6303N

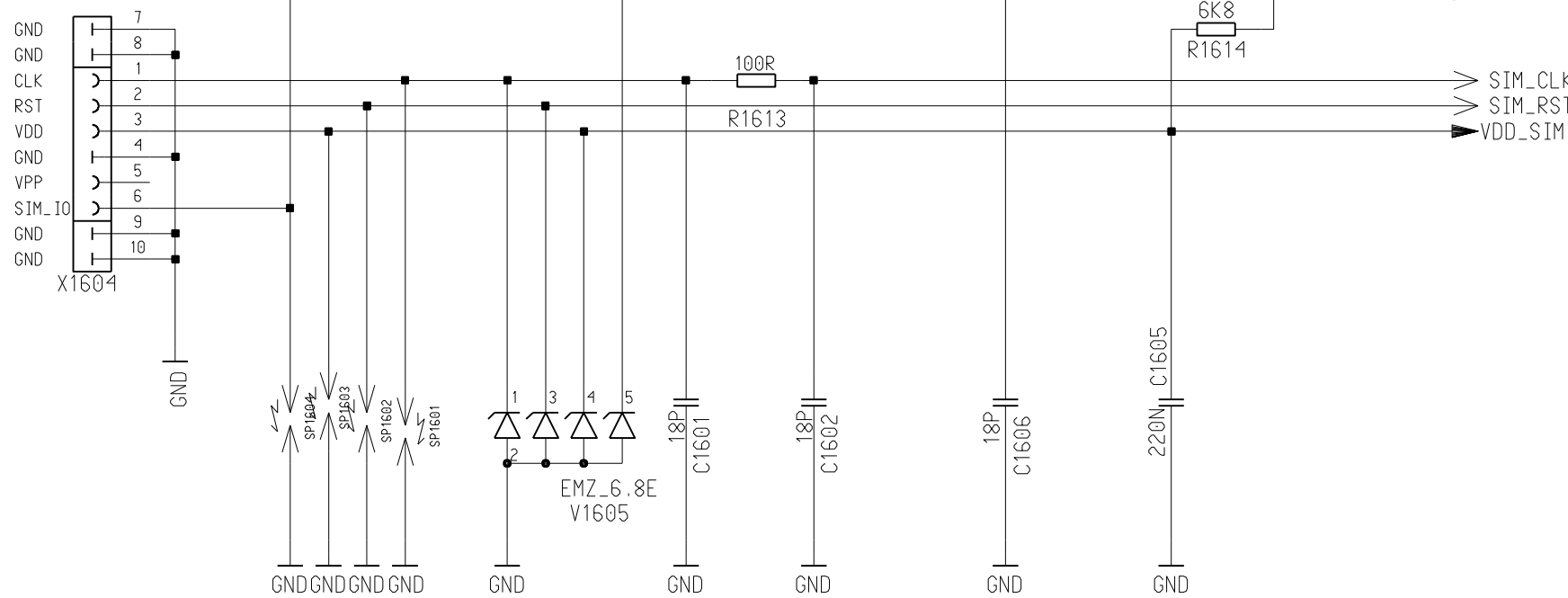
65-Platform\_schematic\_sheet28



SIM\_INTERFACE

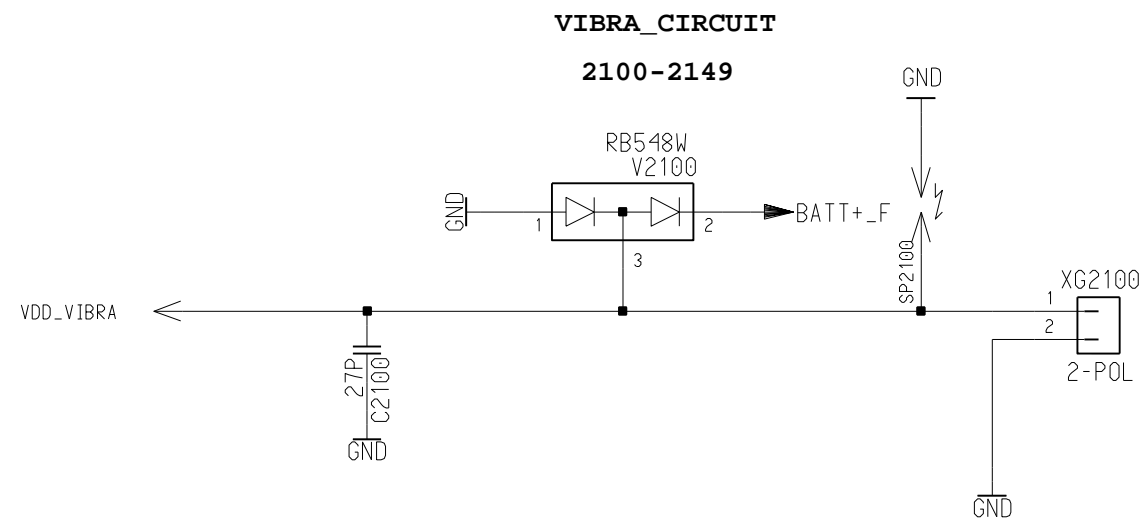
1600-1659

SIM\_CARD\_READER\_NEO



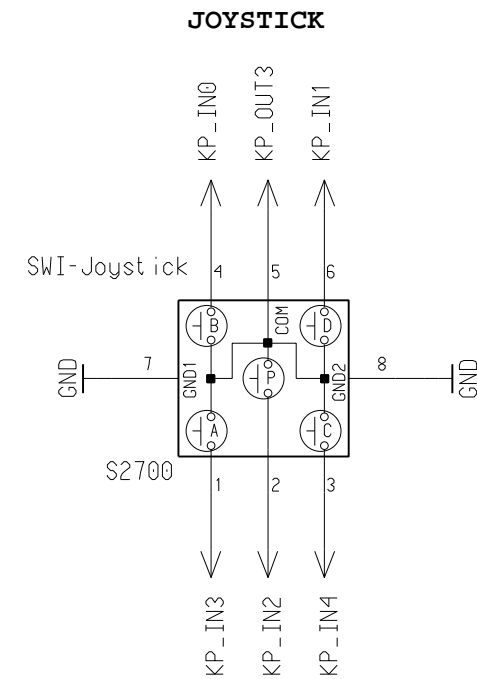
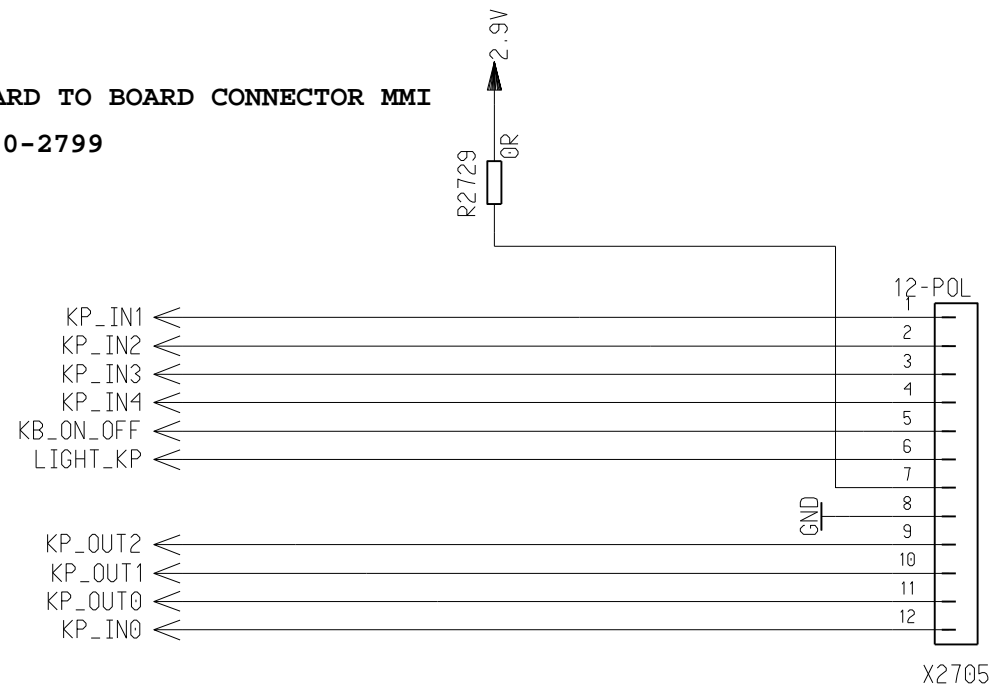
				DATE	16.06.2005	ME75-Condor_variante V2 TOP HIERARCHY LEVEL SCHEMATIC	1:1
				USER	Jaeschke		
				APPR'D			
5	32019	27.09.2005	Bu	COM MD HW 4 KLF		Siemens AG	184021
4	31767	16.09.2005	Bu				
3	31505	09.09.2005	Jae				
2	31233	02.09.2005	Bu				
1	28417	01.07.2005	Rau				sheet16
VERS.	CHANGE NUMBER	DATE	NAME	( Created by BOM number: A5B00900191024-32019 )			

## 65-Platform\_schematic\_sheet21



## BOARD TO BOARD CONNECTOR MMI

2700-2799

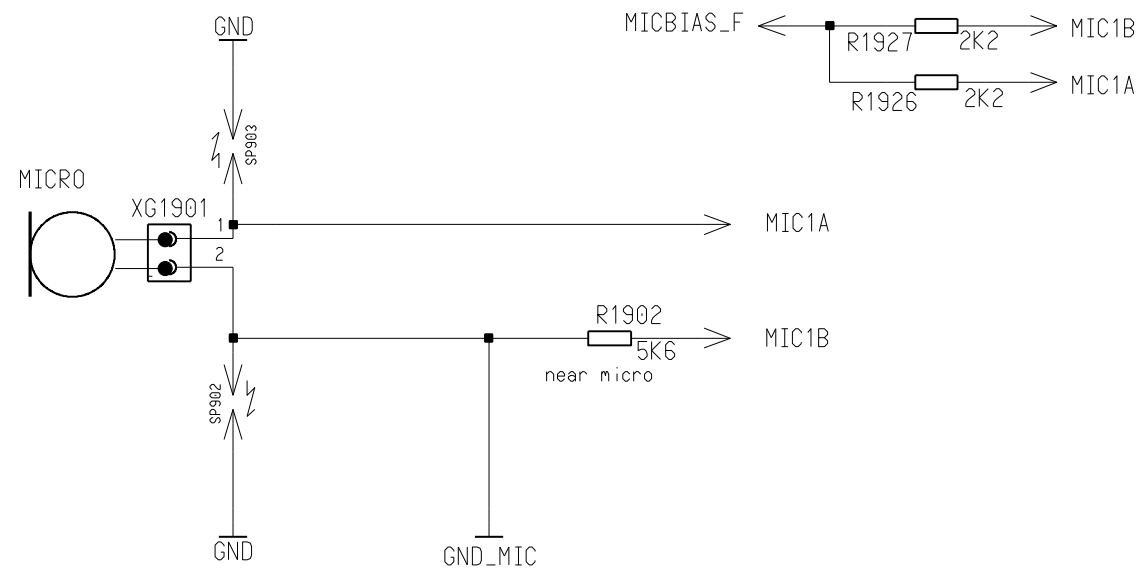


SAR\_GASKET

## 65-Platform\_schematic\_sheet19

### MICROPHONE\_CIRCUIT\_1

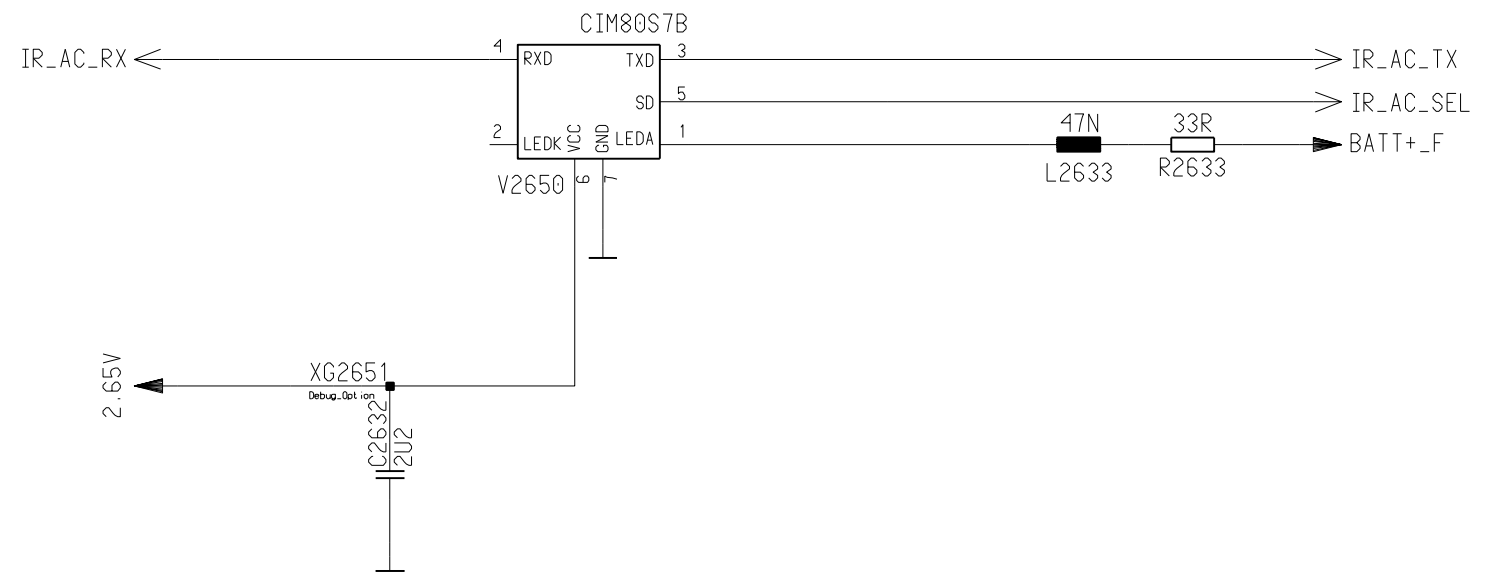
1900-1999



## 65-Platform\_schematic\_sheet27

### IRDA

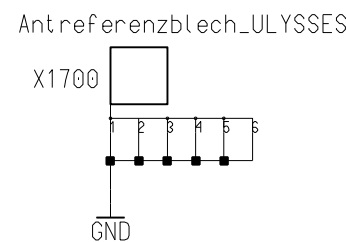
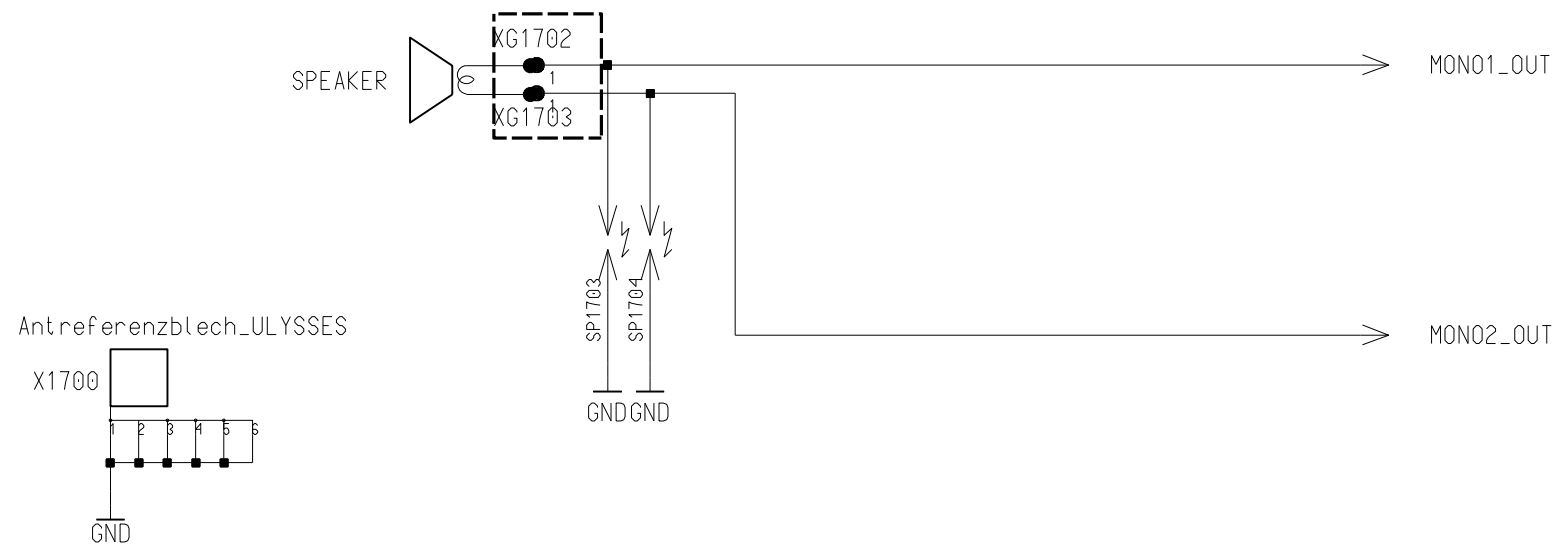
2650-2699



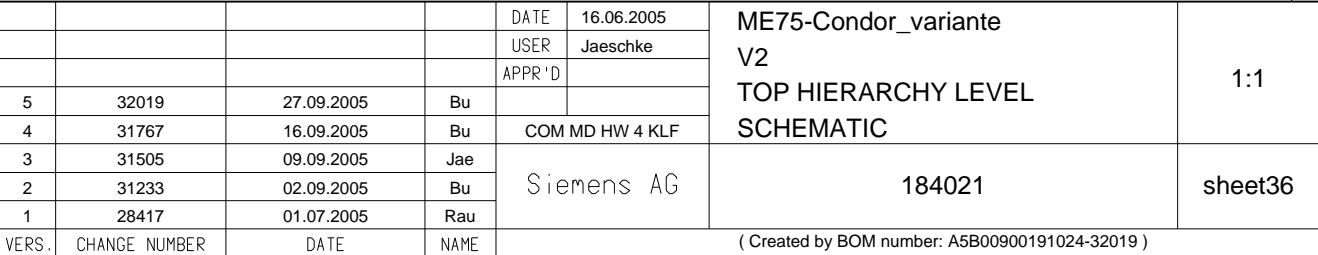
### SPEAKER\_SOLUTION\_1

1700-1749

## 65-Platform\_schematic\_sheet17



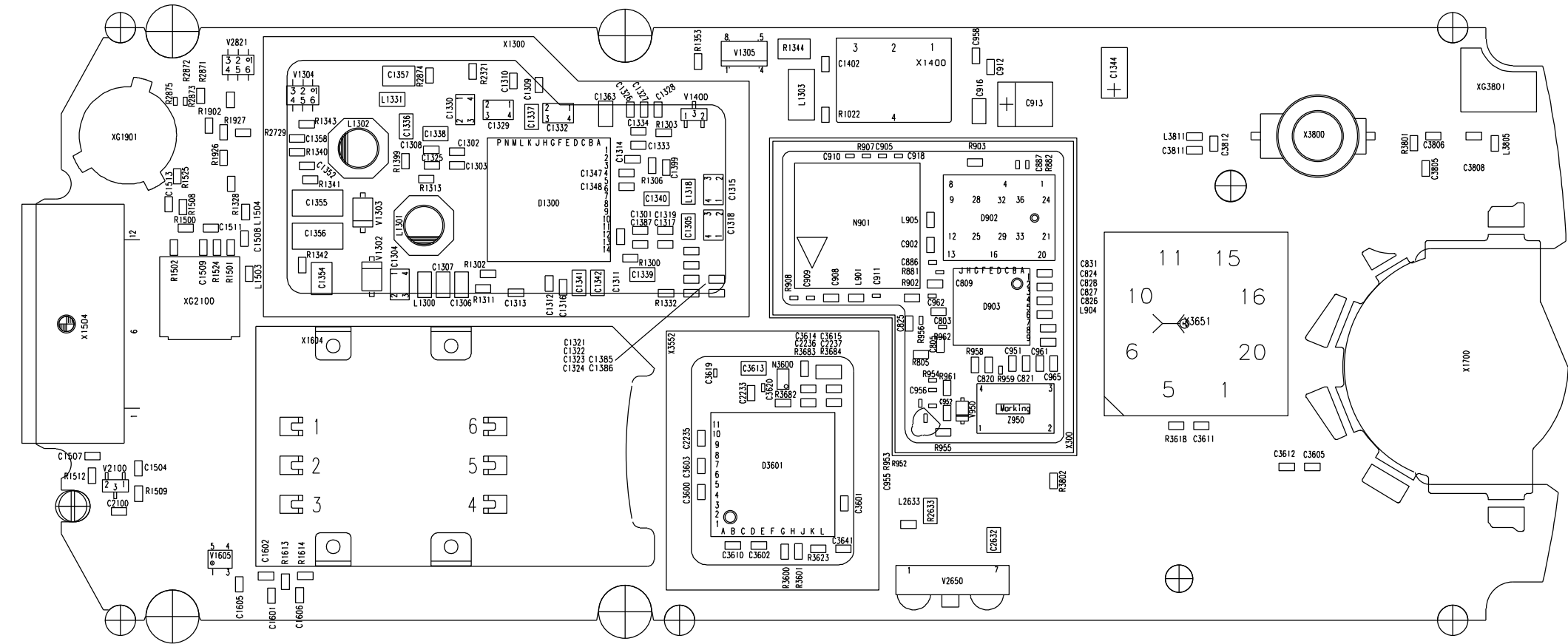
				DATE	16.06.2005	ME75-Condor_variante V2 TOP HIERARCHY LEVEL SCHEMATIC	1:1
				USER	Jaeschke		
				APPR'D			
5	32019	27.09.2005	Bu			Siemens AG	184021
4	31767	16.09.2005	Bu		COM MD HW 4 KLF		
3	31505	09.09.2005	Jae				
2	31233	02.09.2005	Bu				
1	28417	01.07.2005	Rau				
VERS.	CHANGE NUMBER	DATE	NAME	( Created by BOM number: A5B00900191024-32019 )			



C1000	8C	C1351	7B	R2311	6B
C1001	8B	C1381	7A	S2700	7B
C1002	7B	C1382	7A	V1500	7B
C1003	7B	C1515	9B	V2302	7B
C1004	7B	C2231	7C	X1000	8C
C1011	7B	C2238	7C	X2202	6A
C1037	7C	C2320	7A	X2203	2A
C1110	8C	D1000	8C	X2705	9A
C1120	7B	D1201	7A	Z1000	7B
C1121	7B	D1203	8B	Z1500	9B
C1122	9C	N1501	9C		
C1123	8B	R1003	8B		
C1124	8B	R1006	8C		
C1125	8C	R1012	7B		
C1126	7B	R1014	7B		
C1127	8C	R1018	7B		
C1128	8C	R1021	7C		
C1129	7B	R1023	7C		
C1130	8C	R1024	7C		
C1131	8C	R1025	7C		
C1132	8B	R1039	7C		
C1133	7C	R1041	8B		
C1134	9B	R1042	8B		
C1135	8B	R1043	8B		
C1136	8B	R1046	8B		
C1137	9B	R1051	8B		
C1139	9B	R1052	8B		
C1140	7B	R1055	8B		
C1141	8C	R1130	8B		
C1200	8A	R1200	8A		
C1201	8A	R1210	8A		
C1202	7A	R1308	8C		
C1203	8A	R1320	8A		
C1204	7A	R1507	7B		
C1205	7A	R1510	9B		
C1207	7A	R1511	9B		
C1208	8A	R1513	7C		
C1209	8B	R1515	9B		
C1211	8A	R2310	6B		

Achtung : Höhenprofil C24\_\_\_\_-\_\_\_\_-42 (gilt nur fuer Entwicklung)  
Liefervarianten siehe : V24851-Z2000-A1-\*--35

				DATE	16.06.2005	ME75-Condor_variante V2 WIRING DIAGRAMM (SOLDER SIDE 1)	3:1
				NAME	Jaeschke		
				APPR'D			
5	32019	27.09.2005	Bu	STD		SIEMENS AG	SHEET 1+
4	31767	16.09.2005	Bu	COM MD HW 4 KLF			
3	31505	09.09.2005	Jae				
2	31233	02.09.2005	Bu				
1	28417	01.07.2005	Rau			184022	
VERS.	CHANGE NUMBER	DATE	NAME	( Created by BOM number: A5B00900191024-32019 )			



C803	6B	C1305	5B	C1344	7A	C3605	8C	R805	6B	R1508	3B	V2650	7C
C805	6B	C1306	4B	C1347	5A	C3610	5C	R881	6B	R1509	2C	V2821	3A
C809	6B	C1307	4B	C1348	5B	C3611	8B	R882	7A	R1512	2C	X300	7B
C820	7B	C1308	4A	C1352	3A	C3612	8C	R902	6B	R1524	3B	X1300	5B
C821	7B	C1309	4A	C1354	3B	C3613	5B	R903	7A	R1525	3A	X1400	6A
C824	7B	C1310	4A	C1355	3B	C3614	6B	R907	6A	R1613	3C	X1504	2B
C825	6B	C1311	5B	C1356	3B	C3615	6B	R908	6B	R1614	3C	X1604	3B
C826	7B	C1312	4B	C1357	4A	C3619	5B	R952	6B	R1902	3A	X1700	9C
C827	7B	C1313	4B	C1358	3A	C3620	6B	R953	6B	R1926	3A	X3552	5B
C828	7B	C1314	5A	C1363	5A	C3641	6C	R954	6B	R1927	3A	X3651	8B
C831	7B	C1315	5B	C1385	5B	C3805	9A	R955	6B	R2321	4A	X3800	8A
C886	6B	C1316	5B	C1386	5B	C3806	9A	R956	6B	R2633	6C	Z950	7B
C887	7A	C1317	5B	C1387	5B	C3808	9A	R958	7B	R2729	3A		
C902	6B	C1318	5B	C1399	5A	C3811	8A	R959	7B	R2871	3A		
C905	6A	C1319	5B	C1402	6A	C3812	8A	R961	6B	R2872	3A		
C908	6B	C1321	5B	C1504	2C	D902	7B	R962	6B	R2873	3A		
C909	6B	C1322	5B	C1507	2B	D903	7B	R1022	6A	R2874	4A		
C910	6A	C1323	5B	C1508	3B	D1300	5A	R1300	5B	R2875	3A		
C911	6B	C1324	5B	C1509	3B	D3601	5C	R1302	4B	R3600	6C		
C912	7A	C1325	4A	C1511	3B	L901	6B	R1303	5A	R3601	6C		
C913	7A	C1326	5A	C1513	3B	L904	7B	R1306	5A	R3618	8B		
C916	7A	C1327	5A	C1601	3C	L905	6B	R1311	4B	R3623	6C		
C918	6A	C1328	5A	C1602	3C	L1300	4B	R1313	4B	R3682	6B		
C951	7B	C1329	4A	C1605	3C	L1301	4B	R1328	3B	R3683	6B		
C952	6B	C1330	4A	C1606	3C	L1302	3A	R1332	5B	R3684	6B		
C955	6B	C1332	5A	C2100	2C	L1303	6A	R1340	3A	R3801	9A		
C956	6B	C1333	5A	C2233	5B	L1318	5B	R1341	3B	R3802	7C		
C958	7A	C1334	5A	C2235	5B	L1331	4A	R1342	3B	V950	7B		
C961	7B	C1336	4A	C2236	6B	L1503	3B	R1343	3A	V1302	4B		
C962	6B	C1337	4A	C2237	6B	L1504	3B	R1344	6A	V1303	4B		
C965	7B	C1338	4A	C2632	7C	L2633	6C	R1353	5A	V1304	3A		
C1301	5B	C1339	5B	C3600	5C	L3805	9A	R1399	4A	V1305	5A		
C1302	4A	C1340	5B	C3601	6C	L3811	8A	R1500	3B	V1400	5A		
C1303	4A	C1341	5B	C3602	5C	N901	6B	R1501	3B	V1605	3C		
C1304	4B	C1342	5B	C3603	5B	N3600	6B	R1502	3B	V2100	2C		

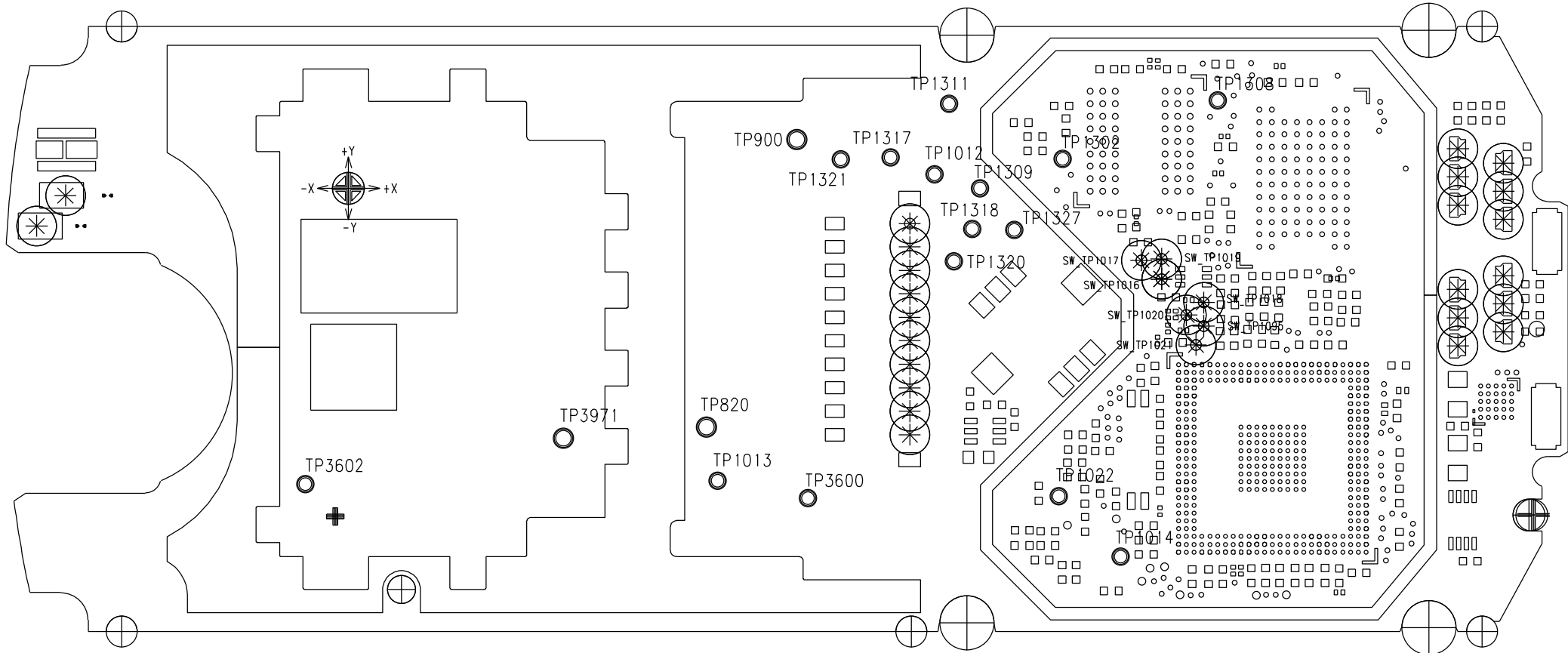
Achtung : Höhenprofil C24\_---\_---\_42 (gilt nur fuer Entwicklung)  
Liefervarianten siehe : V24851-Z2000-A1-\*-35

				DATE	16.06.2005	ME75-Condor_variante	
				NAME	Jaeschke	V2	
				APPR'D		WIRING DIAGRAMM (SOLDER SIDE 2)	3:1
5	32019	27.09.2005	Bu	STD			
4	31767	16.09.2005	Bu	COM MD HW 4 KLF			
3	31505	09.09.2005	Jae				
2	31233	02.09.2005	Bu				
1	28417	01.07.2005	Rau				
VERS.	CHANGE NUMBER	DATE	NAME	( Created by BOM number: A5B00900191024-32019 )			
				SIEMENS AG	184022		SHEET 2+



PROPRIETARY DATA, COMPANY CONFIDENTIAL  
ALL RIGHTS RESERVED

ALS BETRIEBSGEHEIMNIS ANVERTRAUT  
ALLE RECHTE VORBEHALTEN

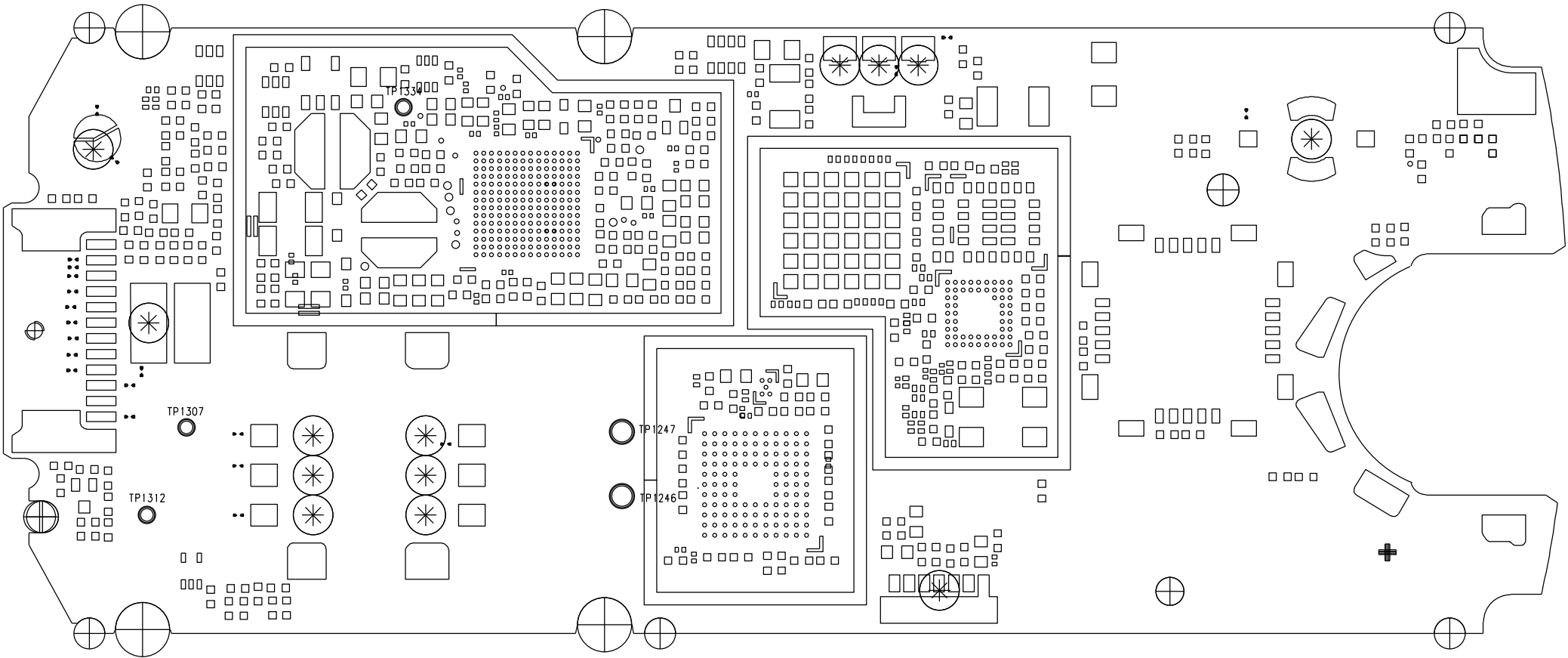


TP820	5B
TP900	6A
TP1012	7A
TP1013	5C
TP1014	7C
TP1022	7C
TP1302	7A
TP1308	8A
TP1309	7B
TP1311	7A
TP1317	6A
TP1318	7B
TP1320	7B
TP1321	6A
TP1327	7B
TP3600	6C
TP3602	3C
TP3971	5B

				DATE	16.06.2005	ME75-Condor_variante V2 TESTPOINT DIAGRAMM (SIDE 1)	3:1
				NAME	Jaeschke		
				APPR'D			
				STD			
				COM MD HW 4 KLF		SIEMENS AG	SHEET 1+
2	31233	02.09.2005	Bu				
1	28417	01.07.2005	Rau				
VERS.	CHANGE NUMBER	DATE	NAME	( Created by BOM number: A5B00900191024-31233 )			

PROPRIETARY DATA, COMPANY CONFIDENTIAL  
ALL RIGHTS RESERVED

ALS BETRIEBSGEHEIMNIS ANVERTRAUT  
ALLE RECHTE VORBEHALTEN



TP1246 5C  
TP1247 5B  
TP1307 3B  
TP1312 2C  
TP1334 4A

				DATE	16.06.2005	ME75-Condor_variante V2 TESTPOINT DIAGRAMM (SIDE 2)	3:1
				NAME	Jaeschke		
				APPR'D			
				STD			
				COM MD HW 4 KLF		184023	SHEET 2-
2	31233	02.09.2005	Bu	SIEMENS AG			
1	28417	01.07.2005	Rau				
VERS.	CHANGE NUMBER	DATE	NAME	( Created by BOM number: A5B00900191024-31233 )			

Als Betriebsgeheimnis anvertraut  
Alle Rechte vorbehalten

[illegible]

Proprietary data, company confidential.  
All rights reserved

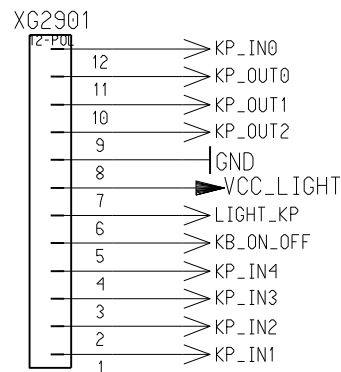
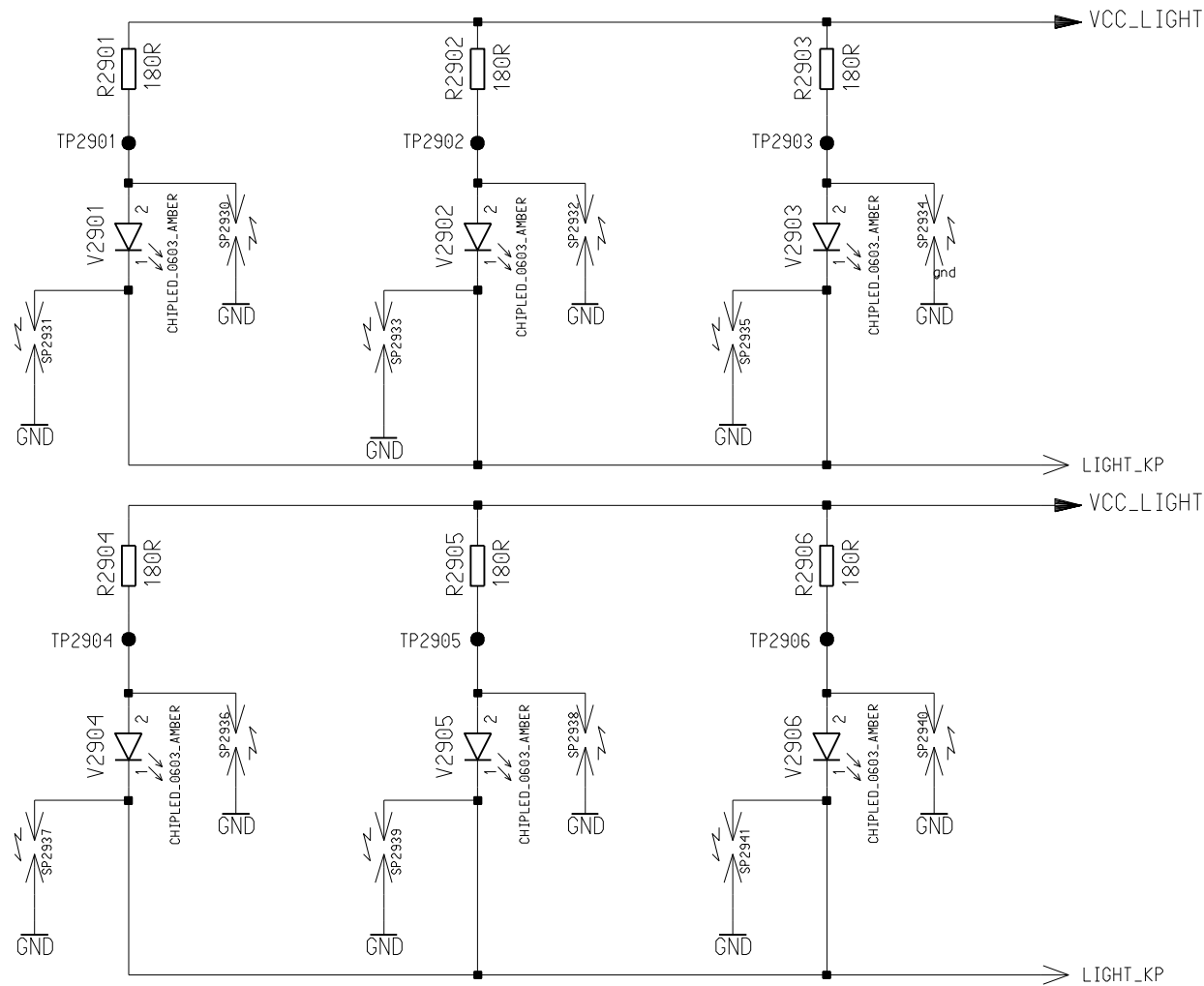
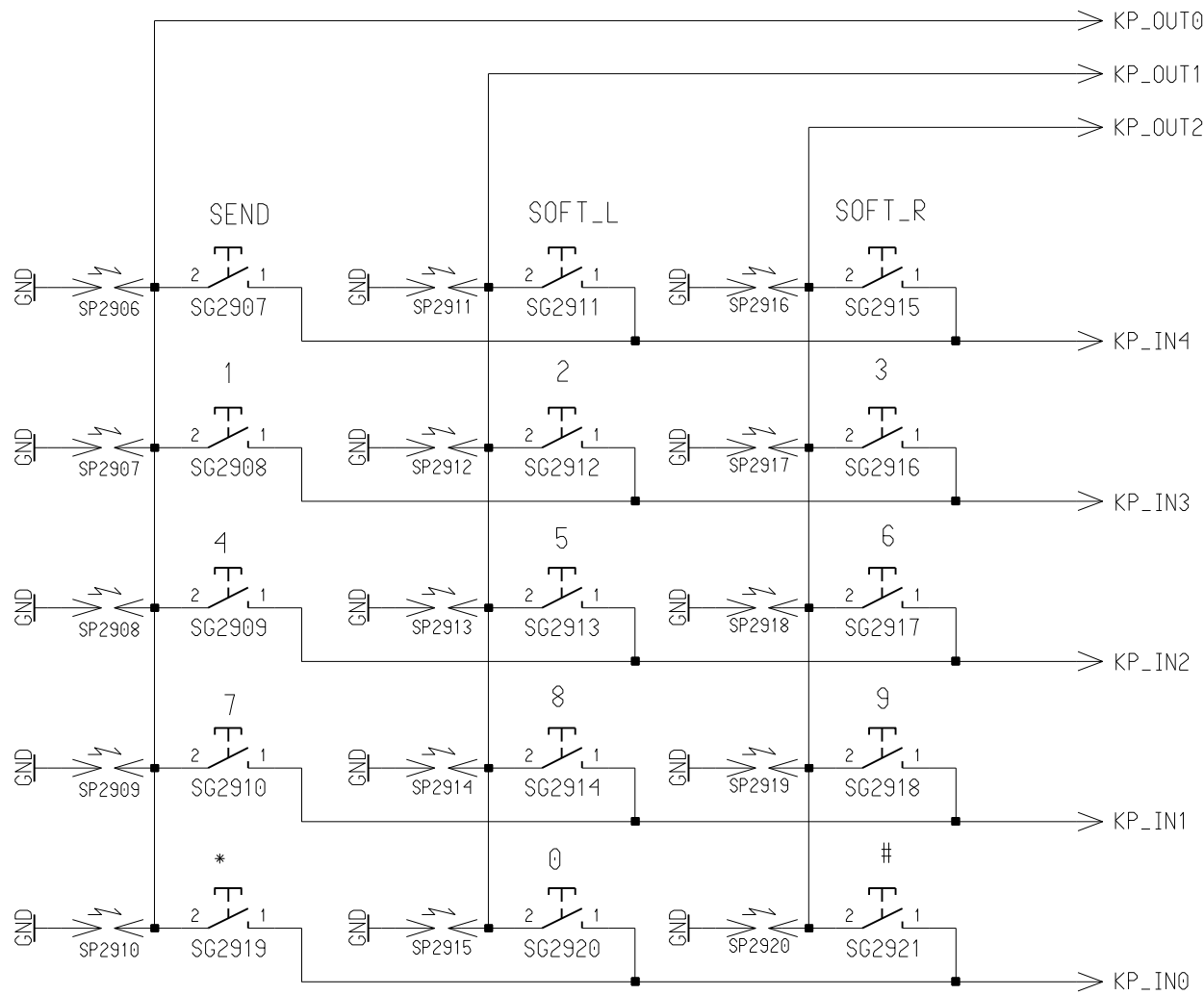
Als Betriebsgeheimnis anvertraut  
Alle Rechte vorbehalten

1				2				3				4				5				
KB_ON_OFF /sheet1 8 D /sheet1 4 D																	A			
KP_IN0 /sheet1 5 C /sheet1 8 D																	B			
KP_IN1 /sheet1 5 C /sheet1 8 E																				
KP_IN2 /sheet1 8 D /sheet1 5 C																				
KP_IN3 /sheet1 8 D /sheet1 5 B																				
KP_IN4 /sheet1 8 D /sheet1 5 B																	C			
KP_OUT0 /sheet1 5 A /sheet1 8 D																				
KP_OUT1 /sheet1 8 D /sheet1 5 A																				
KP_OUT2 /sheet1 8 D /sheet1 5 A																				
LIGHT_KP /sheet1 8 D /sheet1 10 B /sheet1 10 C																	D			
VCC_LIGHT /sheet1 8 D /sheet1 10 B /sheet1 10 A																				
																	E			
				DATE	15.06.2005		MMI ME75 Condor-B1 Variant 1 / 4_Layer TOP HIERARCHY LEVEL SCHEMATIC						1:1							
				USER	jaeschke															
				APPR'D																
				COM MD PD HW4 KLF				178335						netlist1						
				Siemens AG																
1	28414	15.06.2005	jae																	
VERS.	CHANGE NUMBER	DATE	NAME	( Created by BOM number: A5B00900190929-28414 )																

Proprietary data, company confidential.  
All rights reserved

Als Betriebsgeheimnis anvertraut  
Alle Rechte vorbehalten

1				2				3				4				5			
R2901 /sheet1 6 A R2902 /sheet1 8 A R2903 /sheet1 9 A R2904 /sheet1 6 B R2905 /sheet1 8 B R2906 /sheet1 9 B TP2904 /sheet1 6 B TP2905 /sheet1 8 B TP2901 /sheet1 6 A TP2902 /sheet1 8 A TP2903 /sheet1 9 A TP2906 /sheet1 9 B V2901 /sheet1 6 A V2902 /sheet1 8 A V2903 /sheet1 9 A V2904 /sheet1 6 C V2905 /sheet1 8 C V2906 /sheet1 9 C																A			
																B			
																C			
																D			
																E			
				DATE	15.06.2005	MMI ME75 Condor-B1 Variant 1 / 4_Layer TOP HIERARCHY LEVEL SCHEMATIC						1:1							
				USER	jaeschke														
				APPR'D															
				COM MD PD HW4 KLF															
				Siemens AG				178335						poslist1					
1	28414	15.06.2005	jae																
VERS.	CHANGE NUMBER	DATE	NAME	( Created by BOM number: A5B00900190929-28414 )															



				DATE	15.06.2005	MMI ME75 Condor-B1 Variant 1 / 4_Layer TOP HIERARCHY LEVEL SCHEMATIC	1:1	
				USER	jaeschke			
				APPR'D				
				COM MD PD HW4 KLF				
				Siemens AG		178335	sheet1	
1	28414	15.06.2005	jae					
VERS.	CHANGE NUMBER	DATE	NAME	( Created by BOM number: A5B00900190929-28414 )				

PROPRIETARY DATA, COMPANY CONFIDENTIAL  
ALL RIGHTS RESERVED

ALS BETRIEBSGEHEIMNIS ANVERTRAUT  
ALLE RECHTE VORBEHALTEN

R2901	3B
R2902	4B
R2903	3B
R2904	4B
R2905	3B
R2906	4B
V2901	3A
V2902	3A
V2903	3B
V2904	4B
V2905	3B
V2906	3B

Achtung : Höhenprofil C24\_\_\_\_-\_\_\_\_-\_\_\_\_-42 (gilt nur fuer Entwicklung)  
Liefervarianten siehe : V24851-Z2000-A1-\*-35

				Datum	15.06.2005	MMI ME75 Condor-B1 Variant 1 / 4_Layer WIRING DIAGRAM (SOLDER SIDE 1)	3 : 1
				Bearb	jaeschke		
				Gepr.			
				Norm			
				COM MD PD HW4 KLF			
				Siemens AG		178336	Blatt 1+
1	28414	15.06.2005	joe				
Zust.	Mitteilung	Datum	Name	( Created by BOM number: A5B00900190929-28414 )			

PROPRIETARY DATA, COMPANY CONFIDENTIAL  
ALL RIGHTS RESERVED

ALS BETRIEBSGEHEIMNIS ANVERTRAUT  
ALLE RECHTE VORBEHALTEN

1

2

3

4

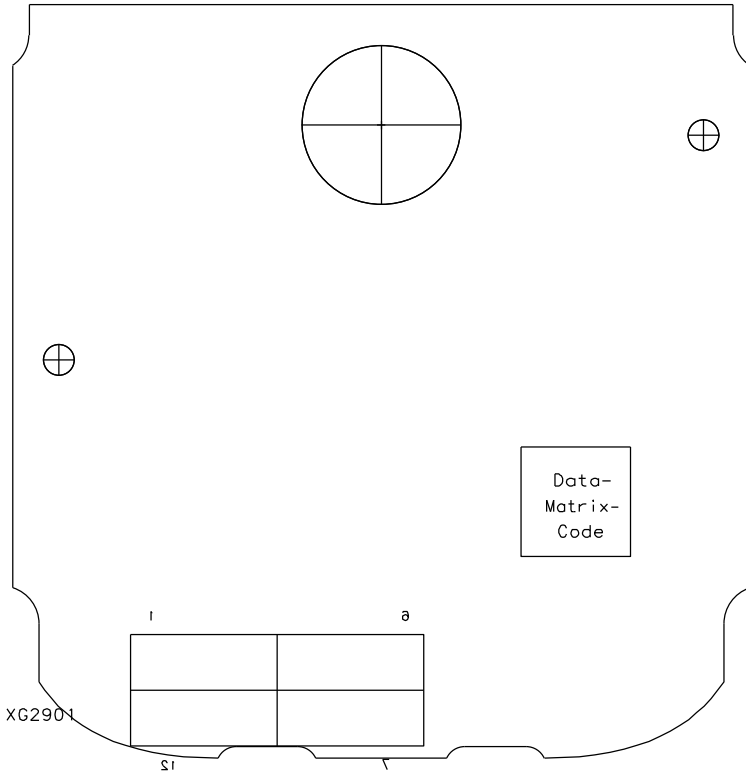
5

A

B

D

E



Achtung : Höhenprofil C24\_\_\_\_-\_\_\_\_-\_\_\_\_-42 (gilt nur fuer Entwicklung)  
Liefervarianten siehe : V24851-Z2000-A1-\*-35

				Datum	15.06.2005	MMI ME75 Condor-B1 Variant 1 / 4_Layer WIRING DIAGRAMM (SOLDER SIDE 2)	3:1
				Bearb	jaeschke		
				Gepr.			
				Norm			
				COM MD PD HW4 KLF			
				Siemens AG			Blatt
1	28414	15.06.2005	joe			178336	2+
Zust.	Mitteilung	Datum	Name	( Created by BOM number: A5B00900190929-28414 )			



PROPRIETARY DATA, COMPANY CONFIDENTIAL  
ALL RIGHTS RESERVED

ALS BETRIEBSGEHEIMNIS ANVERTRAUT  
ALLE RECHTE VORBEHALTEN

1

2

3

4

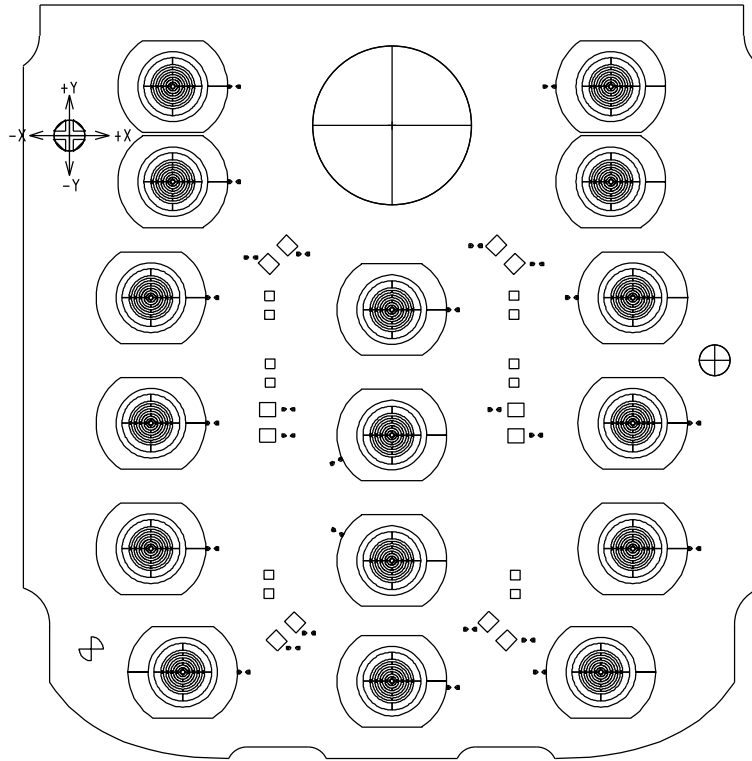
5

A

B

D

E

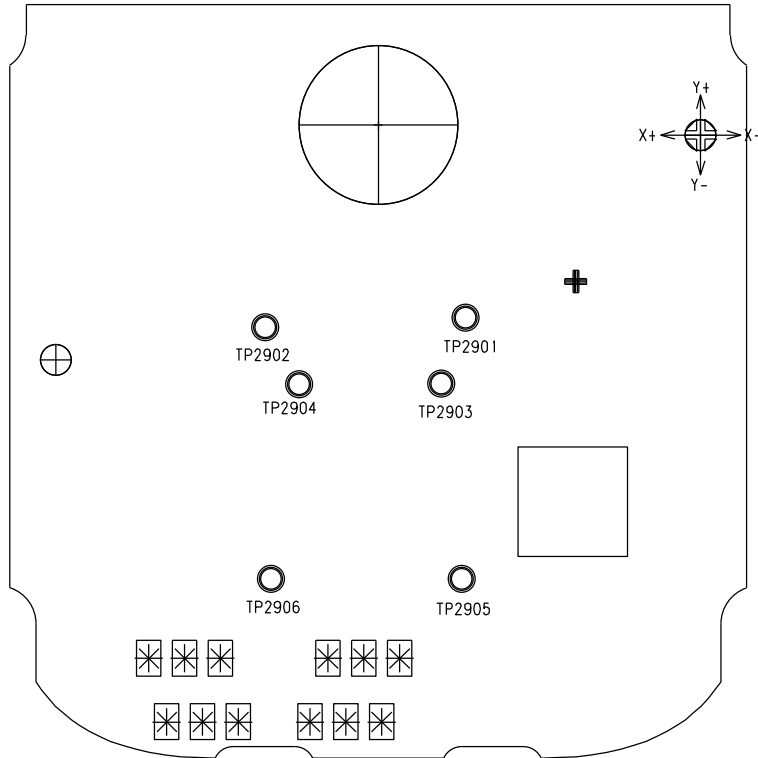


				Datum	15.06.2005	MMI ME75 Condor-B1 Variant 1 / 4_Layer TESTPOINT DIAGRAMM (SIDE 1)	3:1
				Bearb	jaeschke		
				Gepr.			
				Norm			
				COM MD PD HW4 KLF			
				Siemens AG			Blatt
				178337			1+
1	28414	15.06.2005	joe				
Zust.	Mitteilung	Datum	Name	( Created by BOM number: A5B00900190929-28414 )			

PROPRIETARY DATA, COMPANY CONFIDENTIAL  
ALL RIGHTS RESERVED

ALS BETRIEBSGEHEIMNIS ANVERTRAUT  
ALLE RECHTE VORBEHALTEN

TP2901	3B
TP2902	3B
TP2903	3B
TP2904	3B
TP2905	3B
TP2906	3B



				Datum	15.06.2005	MMI ME75 Condor-B1 Variant 1 / 4_Layer TESTPOINT DIAGRAMM (SIDE 2)	3:1
				Bearb	jaeschke		
				Gepr.			
				Norm			
				COM MD PD HW4 KLF			
				Siemens AG			Blatt 2-
1	28414	15.06.2005	joe				
Zust.	Mitteilung	Datum	Name	( Created by BOM number: A5B00900190929-28414 )			